

CITY OF NEWBERG

2022 PAVEMENT IMPROVEMENTS PROJECT

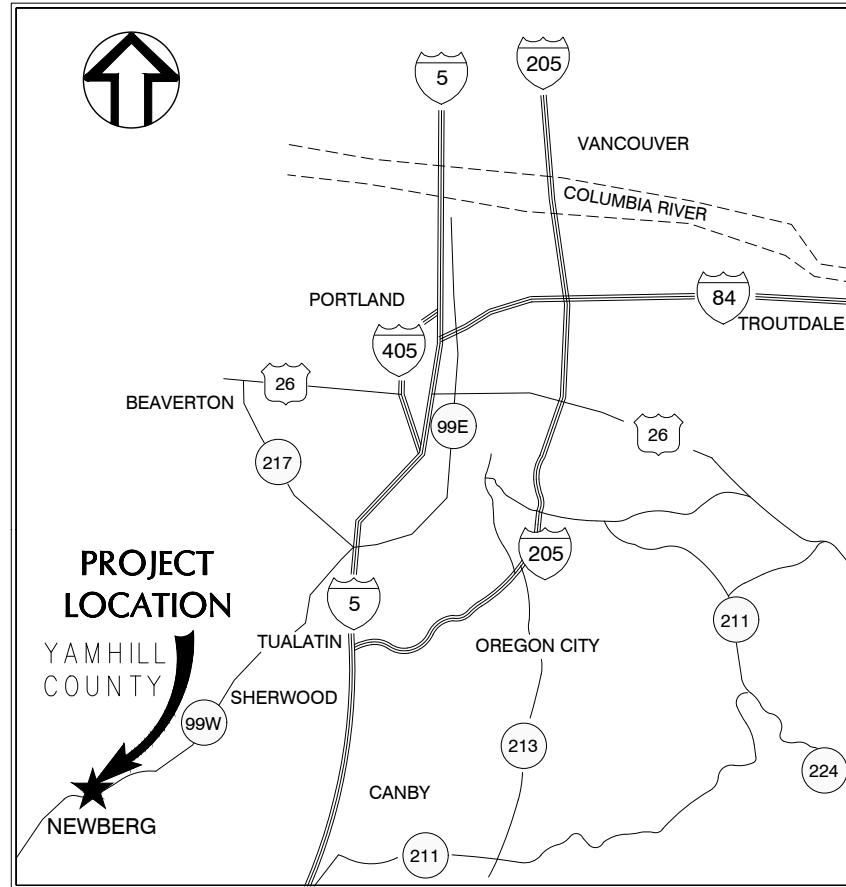
JULY 2022



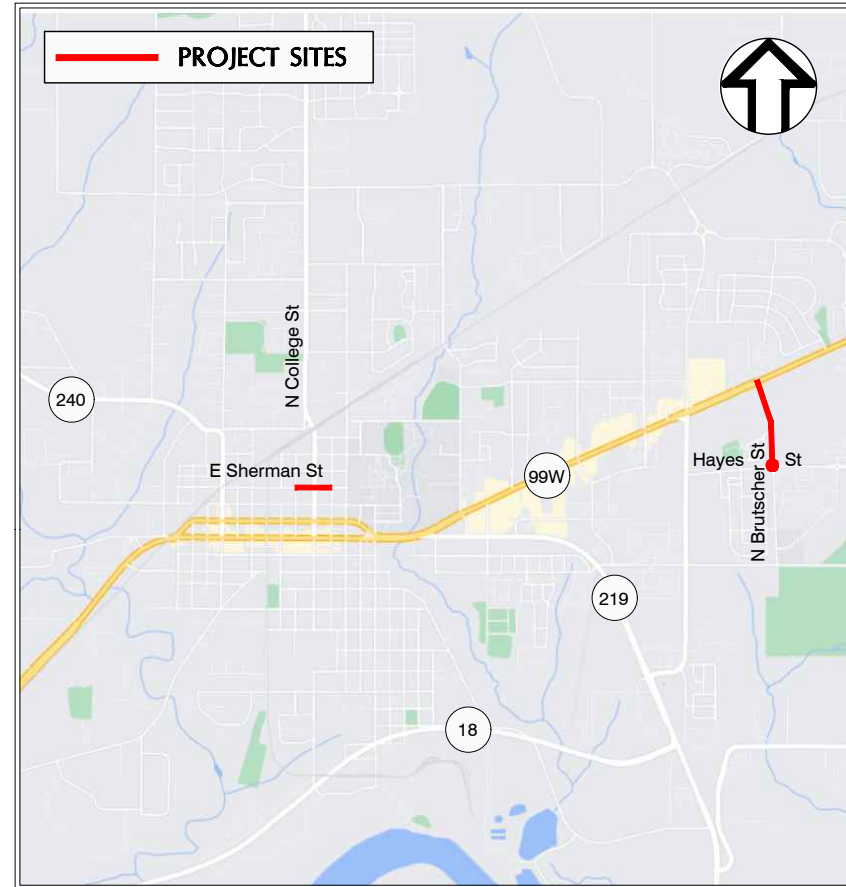
NO.	REVISION	BY	DATE
		JH	
		TS	
		WW	

DESIGNED BY: JH
DRAWN BY: TS
CHECKED BY: WW

ONE INCH AT FULL SCALE.
IF NOT ONE INCH ADJUST SCALE ACCORDINGLY



LOCATION MAP
NOT TO SCALE



PROJECT SITE MAP
NOT TO SCALE

SHEET INDEX

G1	COVER
G2	GENERAL NOTES & LEGEND
G3	GENERAL PHASING & TRAFFIC CONTROL NOTES
G4	E SHERMAN STREET PHASE 1 & 2 TRAFFIC CONTROL
G5	ODOT TRAFFIC CONTROL - OR HWY 99
G6	N BRUTSCHER STREET PHASE 1 TRAFFIC CONTROL
G7	N BRUTSCHER STREET PHASE 2 TRAFFIC CONTROL
G8	N BRUTSCHER STREET PHASE 3 TRAFFIC CONTROL
G9	TRAFFIC CONTROL DETAILS
G10	TYPICAL SECTIONS
C1	EAST SHERMAN STREET PLAN & PROFILE I
C2	EAST SHERMAN STREET PLAN & PROFILE II
C3	EAST SHERMAN STREET PLAN & PROFILE III
C4	NORTH BRUTSCHER STREET PLAN & PROFILE I
C5	NORTH BRUTSCHER STREET PLAN & PROFILE II
C6	NORTH BRUTSCHER STREET PLAN & PROFILE III
C7	NORTH BRUTSCHER STREET PLAN & PROFILE IV
C8	NORTH BRUTSCHER STREET PLAN & PROFILE V
C9	HAYES STREET PLAN & PROFILE
C10	N BRUTSCHER STREET & HAYES STREET INTERSECTION PLAN
C11	EAST SHERMAN STORM PLAN & PROFILE
C12	EAST SHERMAN STREET & NORTH SCHOOL STREET RAMP PLAN
C13	EAST SHERMAN STREET & NORTH COLLEGE STREET RAMP PLAN
C14	EAST SHERMAN STREET & NORTH EDWARDS STREET RAMP PLAN
C15	NORTH BRUTSCHER STREET & PRIVATE ROAD RAMP PLAN
C16	NORTH BRUTSCHER STREET & LITTLE OAK STREET RAMP PLAN
C17	N BRUTSCHER STREET & HAYES STREET RAMP PLAN
C18	HAYES STREET & N BRUTSCHER STREET RAMP PLAN
D1	STREET DETAILS I
D2	STREET DETAILS II
D3	STREET DETAILS III
D4	STREET DETAILS IV
D5	EROSION CONTROL & UTILITY DETAILS
D6	SIGNING & STRIPING DETAILS I
D7	SIGNING & STRIPING DETAILS II
TS-01	LEGEND
TS-02	DETECTOR MODIFICATION PLAN

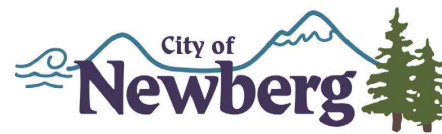
Other Agencies:

Portland General Electric (503) 463-6168 Contact: Shelley Eggiman	NW Natural (503) 610-7744 Contact: Richard Girard	Comcast (503) 924-9120 Contact: Jason McDonald
Astond Broadband (503) 910-8768 Contact: Brett Tomlinson	Ziply Fiber (503) 207-8875 Contact: Scott Albert	CES NW (Surveyor) (503) 968-6655 Contact: Paul Kohn
Yamhill County Transit (503) 474-4900 Contact: Cynthia Thompson	Waste Management (503) 537-6910 Contact: Marc Goehner	First Student School Bus Services (503) 538-8365 Contact: Teresa Townsend

Attention Excavators: Oregon Law requires the contractor to follow rules adopted by the Oregon Utility Notification Center. Those rules are set forth in OAR 952-001-0010 through OAR 952-001-0090. The contractor may obtain copies of these rules from the center by calling (503) 232-1987 or by accessing the Internet at www.state.or.us/government.htm. The contractor must notify the center at least 2 business days, but not more than 10 business days, before commencing an excavation. Call (503) 246-6699.



Civil Engineer: Wallis Engineering
215 W. 4th Ave., Suite 200
Vancouver, Washington 98660
(360) 852-9158
Contact: Jane Vail, P.E.



Owner: City of Newberg
414 E First Street
Newberg, Oregon 97132
Newberg Public Works Department
Contact: Paul Chiu, PE (Project Manager)
(503) 554-1751
Contact: Preston Langeliers, PW Maintenance Superintendent
(503) 537-1234 Ext. 0216

COVER



DATE: 07/2022
PROJECT NO: 1538A



2022 PAVEMENT IMPROVEMENT PROJECT

DRAWING NO:

G1

1 OF 37